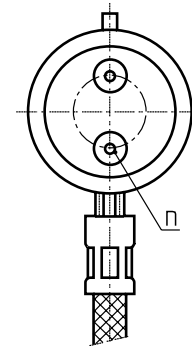
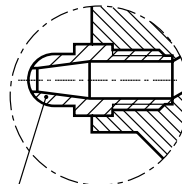


Z 1031 M/2/...

230 V~

◀ + = Fe-CuNi

CuCoBe-Legierung
CuCoBe-alloy
Alliage CuCoBe



► Info

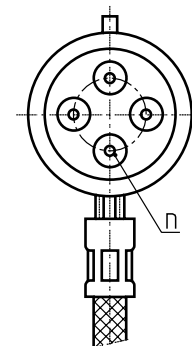
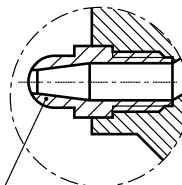
max. °C	Watt	Typ	n	D	L ₁	Nr./No.
280	400	50x78	2	50	78	Z1031M/2/50x78

Z 1031 M/4/...

230 V~

◀ + = Fe-CuNi

CuCoBe-Legierung
CuCoBe-alloy
Alliage CuCoBe



► Info

max. °C	Watt	Typ	n	D	L ₁	Nr./No.
280	400	50x78	4	50	78	Z1031M/4/50x78

This is trial version
www.adultpdf.com